

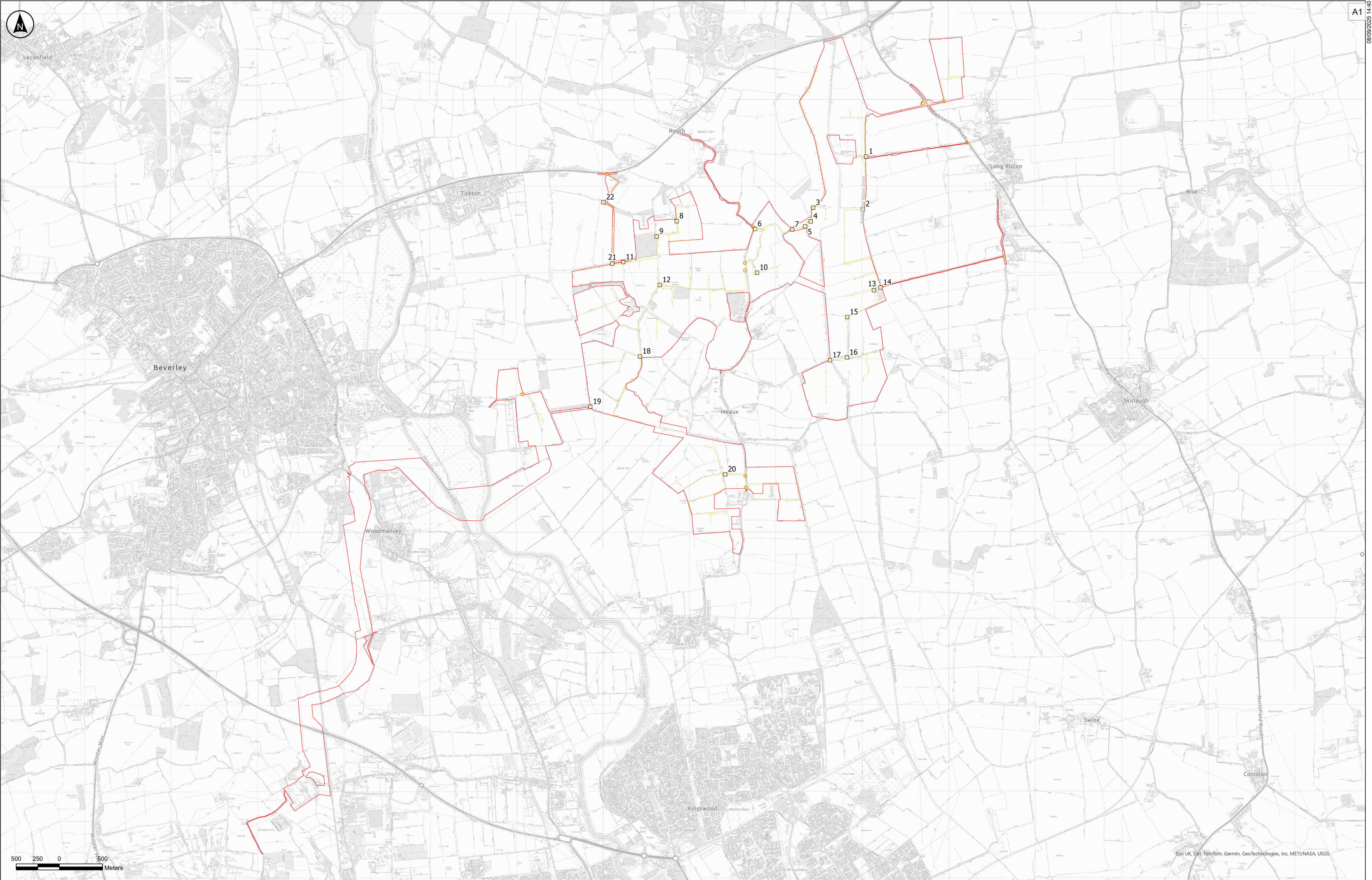
Peartree Hill Solar Farm

Environmental Statement

Volume 3

Figure 3.6: Indicative Culvert Crossing Points

Revision 2



Esri UK, Esri, TomTom, Garmin, GeoTechnologies, Inc, METI/NASA, USGS



Esri UK, Esri, TomTom, Garmin, FAO, METI/NASA, USGS

- Key**
- Order Limits
 - Construction Access Points
 - Internal Access Tracks
 - Proposed Culvert/ Span Bridge

The Base mapping is based upon Ordnance Survey (OS) data. Reproduced by permission of Ordnance Survey on behalf of HMSO. © Crown copyright and database rights 2025. Ordnance Survey AC0000808122

Notes:
1. This drawing is for illustrative purposes only

P03	28/08/2025	NAM	EH	AD	MG
Rev	Date	By	Chkd	Appd	Authd



Project Name
Peartree Hill Solar Farm

Drawing Title
Environmental Statement Volume 3, Figure 3.6: Indicative Culvert Crossing Points and Span Bridges

Scale at A1 1:20,000	Coordinate System: British National Grid
Status DCO Application	
Infrastructure Planning (Applications: Prescribed Forms and Procedure) Regulations 2009: 5(2)(a)	
PINS Number EN010157/APP/6/3	Rev P03

RWE Renewables UK Limited

Windmill Hill Business Park,
Whitehill Way,
Swindon,
Wiltshire,
England,
SN5 6PB
www.rwe.com